

# Starcap®

Superior Flow Maize Starch



**Designed and Manufactured for Pharmaceutical Capsule Filling**

- Superior flow
- Dependable stability



**Colorcon®**

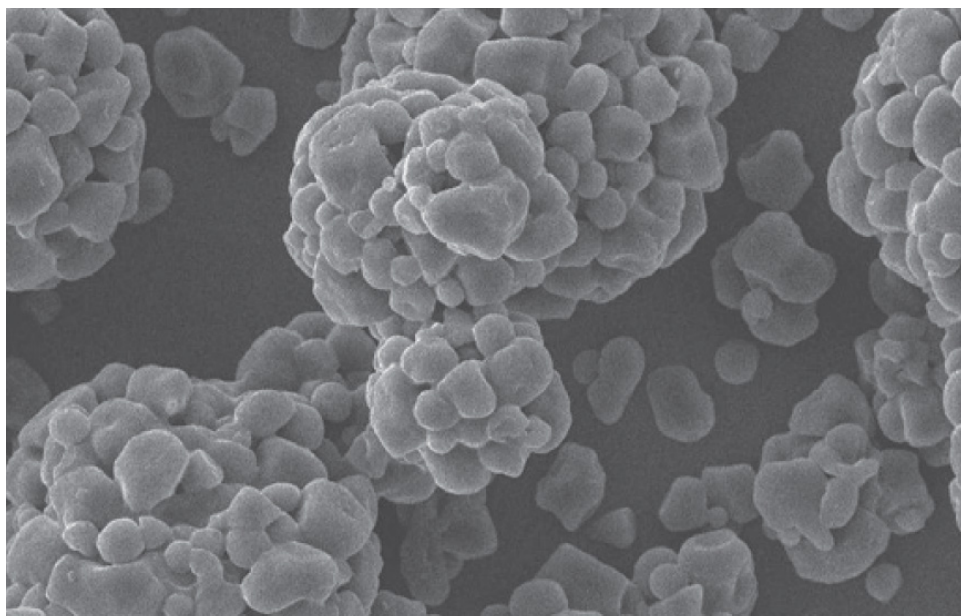
Working Together for a Healthier World

## Uniquely Colorcon

STARCAP®, Superior Flow Maize Starch, has unique particle shape to facilitate excellent flow of your capsule dosage form.

With high flow and low adhesion, StarCap results in clean and efficient capsule filling operation.

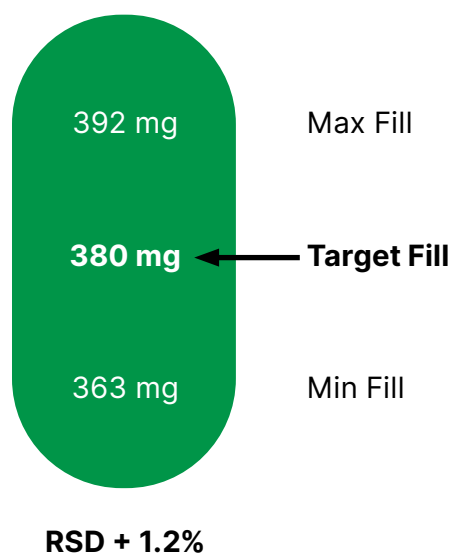
StarCap provides diluent and disintegrant functionality, and aids long-term stability of reactive drugs.



SEM image of StarCap particles

## Superior Flow

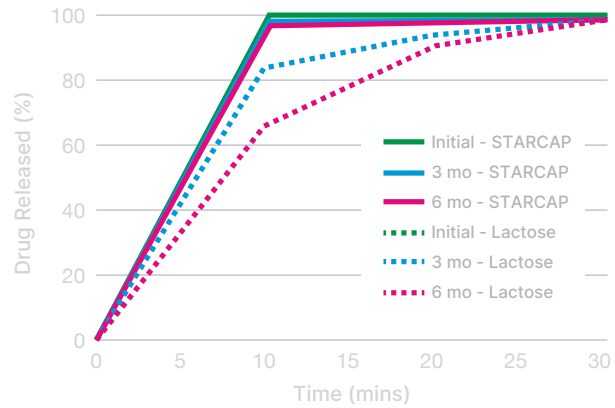
StarCap provides exceptional weight uniformity due to its excellent flow in high speed capsule filling operation.



## Dependable Stability

StarCap is inert in nature and does not interact with API unlike other excipients, such as lactose.

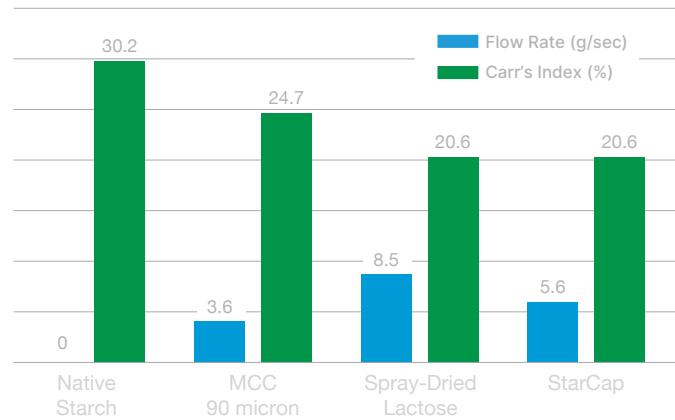
Capsules with 25% Propranolol HCl + 75% StarCap or Lactose. Stability @ 40°C / 75% RH



## Excellent Capsule Plug Formation

In comparison to other capsule filling excipients, StarCap provides excellent compactability to ensure plug formation with dosator encapsulation equipment.

Superior Flow and Compressibility with StarCap



\*Flow rate measured using Sotax FT 300 Flowability Tester, vibration setting 1.7 g

## Designed For Pharmaceutical Use

Manufactured in dedicated GMP facilities, StarCap is a globally acceptable specialty excipient.

- Superior flow and plug formation for high speed capsule filling
- Inert material - No interaction with reactive API
- Meets regulatory standards

## Deliver high-performance products — with Colorcon

Choose Colorcon, leader in pharmaceutical solid oral dose solutions, as a formulation partner of choice in every phase of your product development.

### Film Coatings:

- Optimized formulations specifically for your application and regulatory needs including customized colors and color matching
- Innovative products for mechanical integrity, gloss, pearlescence and environmental protection
- Tablet design concepts, consulting and services to build a strong brand image and stand out from the competition.

### Formulation Technologies:

- Full range of functional excipients
- Technologies for development and production of delayed/enteric release and extended/controlled release tablets and multiparticulates
- HyperStart® service and extensive applications data to provide starting formulations to save you development time and money
- Extensive formulation know-how and technical support to achieve the exact drug release profile desired.

Contact your Colorcon representative or call:

**North America**  
+1-215-699-7733

**Europe/Middle East/Africa**  
+44-(0)-1322-293000

**Latin America**  
+54-11-5556-7700

**India**  
+91-832-6727373

**China**  
+86-21-61982300

[colorcon.com](http://colorcon.com)

